



Quarterly Report on Sales Tax and Business Activity

Top 25 Sales Tax Remitters

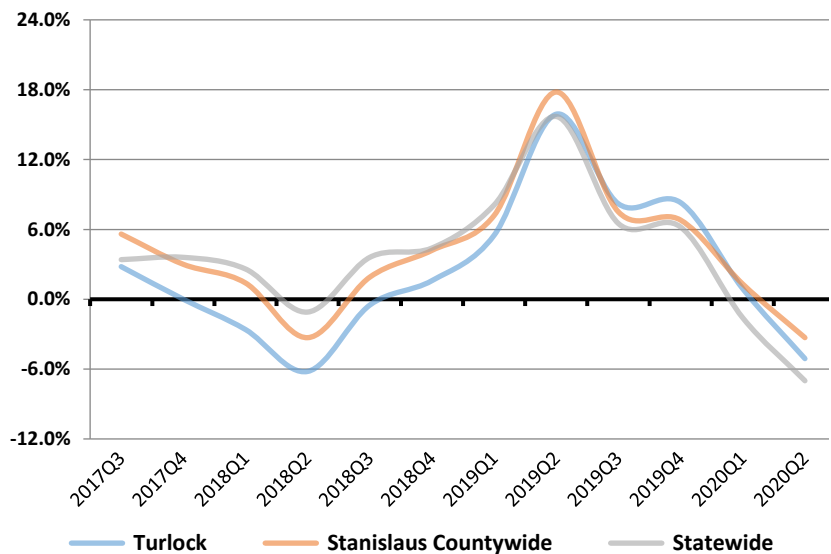
- ARCO AM/PM MINI MARTS
- BONANDER PONTIAC/BUICK/GMC
- CHEVRON SERVICE STATIONS
- COSTCO WHOLESALE
- GARTON FORD TRACTOR
- HOLT OF CALIFORNIA
- HOME DEPOT
- INDEPENDENT ELECTRIC SUPPLY
- JOE M.GOMES AND SONS
- KOHL'S DEPARTMENT STORES
- LOWE'S HOME CENTERS
- MCDONALD'S RESTAURANTS
- N & S TURLOCK
- NELSON-JAMESON
- ROSS STORES
- SAFEBWAY SERVICE STATIONS
- SAVE MART SUPERMARKETS
- SHELL SERVICE STATIONS
- SMITH CHEVROLET
- TARGET STORES
- TJ MAXX
- TURLOCK CHRYSLER DODGE JEEP RAM
- UNITED RENTALS
- VALERO SERVICE STATIONS
- WAL MART STORES

2nd Quarter 2020 in Review

California sales tax cash receipts decreased by 5.7% from the same quarter last year. In this jurisdiction sales tax cash receipts decreased by 1.6% from the same quarter last year due to a decrease of \$6,852,000 in Taxable Sales.

Cash Receipts	Quarter	Annual
Turlock	-1.6%	-5.1%
Stanislaus Countywide Pool	45.9%	20.4%
Stanislaus Countywide	3.0%	-3.3%
Central Valley Region	8.2%	-1.0%
Statewide	-5.7%	-7.0%

Annualized Percent Change in Sales Tax Cash Receipts



Business Activity

Business Activity	Turlock		Central Valley		California	
	Quarter	Annual	Quarter	Annual	Quarter	Annual
TOTAL	-12.8%	-3.7%	-6.6%	0.3%	-26.5%	-7.9%
General Retail	-20.1%	-5.5%	10.9%	4.1%	-33.3%	-9.9%
Food Products	-17.5%	-0.7%	-17.1%	-3.6%	-37.5%	-10.5%
Transportation	-26.3%	-9.5%	-19.1%	-4.7%	-27.7%	-9.7%
Construction	24.8%	8.3%	7.5%	4.0%	-2.9%	0.3%
Business To Business	1.7%	-3.3%	-14.8%	2.4%	-20.3%	-7.2%
COUNTY POOL	39.4%	18.0%	28.0%	12.4%	31.4%	17.7%

City of Turlock



News

- Economic Activity:** Unemployment and consumer confidence remain significant factors affecting revenue flow to California state and local governments, particularly sales tax. Real Gross Domestic Product decreased 32.9% in 2020Q2. This is the biggest drop in history. (Bureau of Economic Analysis)
- Employment:** California's unemployment rate improved to 14.9% in June as the the state's employers added a record 558,200 jobs. This comes after the previous record gain of 134,200 jobs in May and record losses in the months preceding that. In May and June California regained more than a quarter, (26.4%), of the 2,625,500 nonfarm jobs lost in March and April due to the COVID-19 pandemic. (California Employment Development Department)
- Consumer Confidence:** Consumer confidence declined in July after a large gain in June. Significant declines were experienced in Michigan, Florida, Texas and California, largely due to the resurgence of COVID-19. (The Conference Board)

Turlock

Annual Per Capita Sales Tax

Adusted for Inflation
(Constant 2016 \$)

